




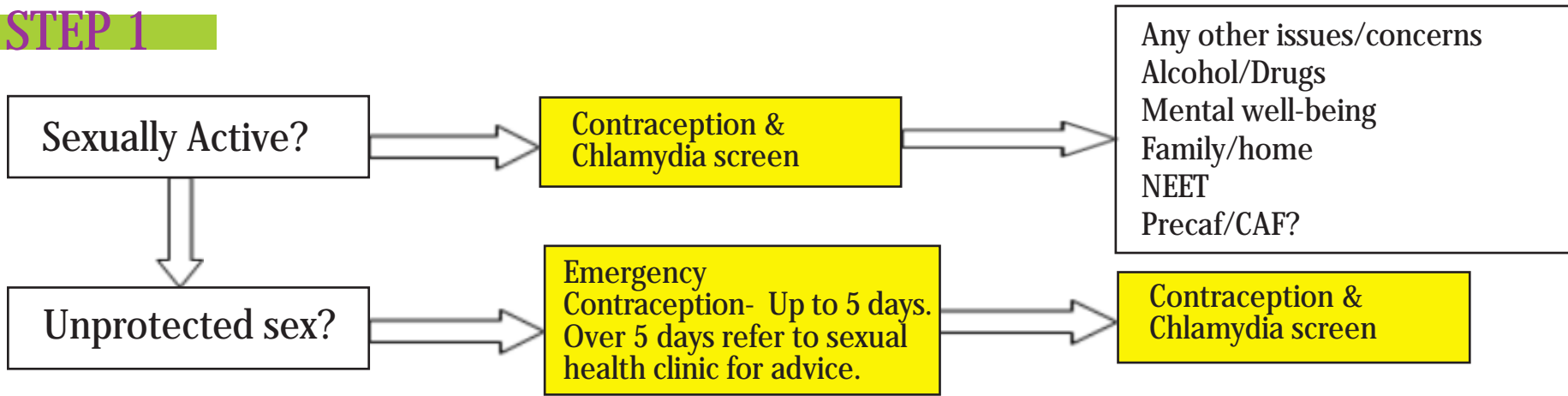
Lancashire
Teenage Pregnancy
Partnership



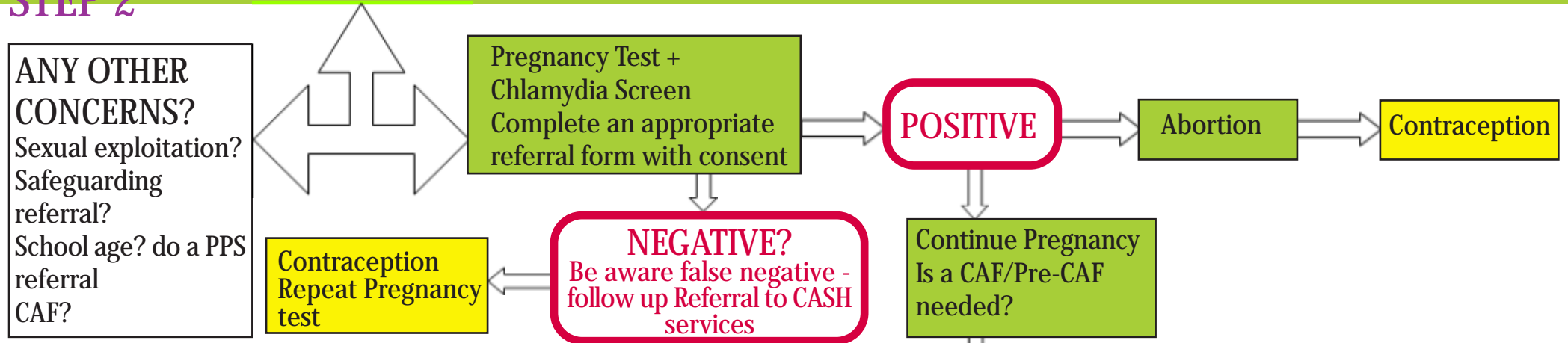
Referral Checklist for Professionals Central Lancs Area

Sexual Health/Teenage Pregnancy Harm reduction flowchart for Professionals

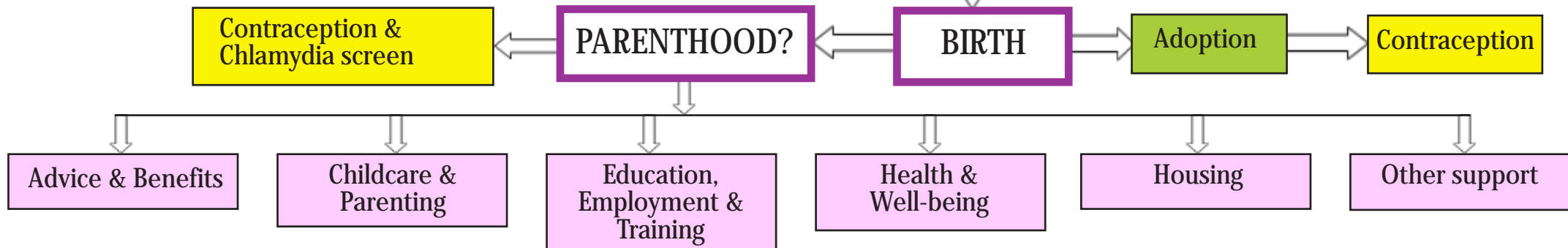
STEP 1



STEP 2



STEP 3

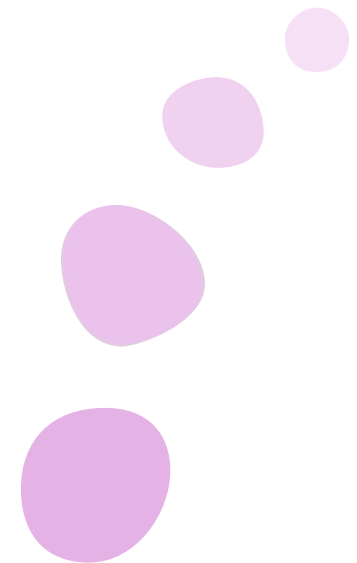


Sexual Health/Teenage Pregnancy Referral Checklist

This referral checklist has been developed to assist professionals who are working with young women who may be pregnant.

There are differences in the ways that professionals can work with young women dependant on whether they are under or over 16.

This information is to help you make the most appropriate referrals for young people.



Contraception and Sexual Health Services

Service	Contact	Information
Central Lancashire NHS Contraception and Sexual Health Service, including Young People specific sexual health services www.centrallancashire.nhs.uk	Central Lancs PC T 01772 644400	Comprehensive contraception & sexual health service for men and women of all ages including services for young people aged under 25. Clinics are delivered in centres across Preston, Chorley, South Ribble and West Lancashire. The Sexual Health Outreach Service in non-health settings for young people, including condom distribution, pregnancy testing, chlamydia screening & advice & information on sex & relationships.
LCC - Young People's Service: Talkwize - Preston Wise Up, Chorley Wise Up, Leyland	01772 255303 01257 517248 01772 621077	Dedicated contraception and sexual health service for young people aged under 19. Drop-in clinics in Preston, Chorley, Leyland, Skelmersdale and Ormskirk.
Family Planning Co-ordinators: Birleywood Health Centre, Skelmersdale Ashurst Health Centre, Skelmersdale Sandy Lane Health Centre, Skelmersdale Tarleton Health Centre Burscough Health Centre Hants Lane Clinic, Ormskirk Ante Natal Clinic, Ormskirk Hospital Chorley Health Centre Sexual Health Services South Ribble Leyland Clinic Penwortham Health Centre Sexual Health Services	01695 724301 01695 724301 01695 732457 01695 727186 01772 814911 01704 892555 01695 573526 01695 656945 01772 644700 01772 644543 01772 644101 01772 745151 01772 644543	Sexual Health Services in a variety of settings for young people, including condom distribution, pregnancy testing, chlamydia screening & advice & information on sex & relationships.
Brook	www.brook.org.uk	Offering free and confidential sexual health advice and contraception to young people under 25 - including Relationships, STI's, Contraception, Pregnancy and Abortion.
GUM Clinic, Ormskirk Hospital GUM Clinic, Royal Preston Hospital	01695 571043 01772 522814	Information, advice and support about pregnancy, free pregnancy testing, and onward referral to antenatal and abortion services.
School Nurse Co-ordinator (West Lancs) School Nurse Co-ordinator (Chorley) School Nurse Co-ordinator (South Ribble)	01695 573526 01257 435963 01257 435963	Some school nurses provide drop-ins in schools.
Central Lancs Condom distribution scheme	Available from LASCA	Condom distribution scheme providing FREE condoms for young people from a range of outlets across Central Lancashire.

Emergency Contraception

Emergency hormonal contraception (EHC), sometimes known as the 'morning after pill', must be started within 72 hours of unprotected sexual intercourse through it is more effective the sooner it is taken. Intrauterine Devices (IUDs) can also be used as emergency contraception and need to be fitted within five days. IUDs are not suitable for all women.

Service	Contact	Information
Contraception and Sexual Health Services	See previous page	EHC can be obtained from Central Lancashire Sexual Health Services. Some clinics can also fit IUDs.
Pharmacies	Your local pharmacy or see www.ruthinking.co.uk or the Line 0800 511 111	EHC can be obtained free of charge from pharmacies participating in the EHC scheme. It can be brought from other pharmacies (approx £25)
GP's	Your own GP Practice www.centrallancashire.nhs.uk	Some GP's will prescribe EHC. It is best to check with the practice before making an appointment.
NHS Walk In Centres Skelmersdale	01695 554260	EHC can be obtained, free of charge, from NHS Walk-In Centres.

Pregnancy Testing and Advice

Brook Brook - Blackburn Brook - Wigan & Leigh	www.brook.org.uk 01254 268700 01942 760000	Information, advice and support about pregnancy, free pregnancy testing and onward referral to antenatal and abortion services.
GPs (see above) Pharmacies (see above)		
School Nurse Co-ordinator (West Lancs) School Nurse Co-ordinator (Chorley) School Nurse Co-ordinator (South Ribble)	01695 573526 01257 435963 01257 435963	Some school nurses provide pregnancy testing and onward referral for pregnant school girls.
LCC - Young People's Service: Talkwize - Preston Wise Up, Chorley Wise Up, Leyland	01772 255303 01257 517248 01772 621077	Offering pregnancy testing, onward referral and information, advice and guidance to pregnant young women.

Continuing Pregnancy

Service	Contact	Information
GPs	Your own GP	GPs can provide information, advice and support and onward refer to antenatal services.
Maternity Hospitals: (West Lancs) Ante Natal Clinic, Ormskirk Hospital Labour Ward, Ormskirk Hospital (Chorley) Labour Ward Ante Natal Clinic Midwifery Unit (24 hours) (South Ribble) Ante Natal Clinic Labour Ward Midwifery Unit (24 hours)	01695 656924 01695 656919 01257 245109 01257 245113 01257 245108 01257 245123 01257 245109 01257 245108	Pregnant women can be referred for antenatal care from their GP or can contact our local maternity departments for further guidance. Each hospital has a Teenage Pregnancy Specialist Midwife.
Community Midwives		Provide maternity care outside the hospital, and visit women and their babies in their homes during the 28 days following birth.
Specialist Midwifery Services: Teenage Pregnancy Midwife (West Lancs) (Chorley) (South Ribble)	07795 265022	This team provide specialist advice and support to women, their families and carers around the issues of: drugs, alcohol, mental health, domestic abuse, HIV and sexual health.
Re-Integration Officer Pregnancy and Parenthood Service: Pregnancy & Parenthood Co-ordinator (West L's) (LEA) Learning Mentors (West Lancs) Pregnancy & Parenthood Co-ordinator (Chorley) (LEA) Learning Mentors (Chorley) Pregnancy & Parenthood Co-ordinator (SR) (LEA) Learning Mentors (SR)	01257 517212 01257 517212	Supports school-aged pregnant young women and teenage parents to consider options and to overcome barriers to remaining in education. The PPS offers mentoring and support to school-age parents and parents-to-be from Lancashire schools to enable them to complete their education and so maximise their potential and that of their children, lessen their social exclusion and provide practical help and support in parenting their children.
LCC- Young People's Service www.lancashire.gov.uk/yps	01772 531781	Offering support to young pregnant women and teenage parents on a wide range of issues including housing, health issues, education, work and training options.
Healthy Start www.healthystart.nhs.uk	0845 607 6823	

Abortion

Service	Contact	Information
Brook	www.brook.org.uk	Information, advice and support on abortion and referral abortion services.
Brook - Blackburn	01254 268700	
Brook - Wigan & Leigh	01942 760000	

Adoption and Fostering

Service	Contact	Information
LCC- Lancashire Adoption Service	0800 1951183 www.lancashire.gov.uk	The role as a local authority is to secure the best possible future for children. Adoption is about meeting the needs of children - not meeting the needs of adults who wish to adopt LCC offers free and confidential advice and support to secure the best possible future for all the children they place. The Fostering Recruitment and Assessment team arrange the temporary placement of children with foster carers when they are unable to live at home for a range of reasons and recruit foster carers.
Fostering Recruitment and Assessment team	0800 1951183 www.lancashire.gov.uk	
British Association for Adoption & Fostering	www.baaf.org.uk	Providing National information on fostering and adoption services.
DirectGov	www.direct.gov.uk	Providing National information on fostering and adoption services.
TALKadoption	0808 808 1234	TALKadoption is a national helpline for young people under 26 who want to talk about anything to do with adoption. Calls are free and confidential.

Advice and Benefits

Service	Contact	Information
LCC - Young People's Service www.lancashire.gov.uk/yps (YPS) The Line YPS InfoCentre, Preston - Urban Exchange YPS InfoCentre, Skelmersdale YPS InfoCentre, Ormskirk YPS InfoCentre, Chorley YPS InfoCentre, South Ribble	01772 531781 0800 511111 01772 255300 01695 737190 01695 583030 01257 248900 01772 426850	YPS can advise pregnant young women and young parents on benefits and services available to them.
JobCentre Plus: New claims for benefits Benefits enquiries Search for a job Chorley Preston South Ribble Skelmersdale	0800 0556688 0845 6088524 0845 6060234 01257 565700 01772 403200 01772 403600 01695 714000	Offering help and advice on benefits and how to apply, finding a job and the recruitment process.
Citizens Advice Bureau (West Lancs) Citizens Advice Bureau (Chorley) Citizens Advice Bureau (South Ribble)	01695 723110 01257 279807 01772 424282	Helps people resolve their legal, financial and other problems by providing free, independent and confidential advice.
LCC - Welfare Rights Main Office (Preston) LCC -Welfare Rights Office (West Lancs) LCC -Welfare Rights Office (Ch & SR)	0845 053 0013 0845 053 0013 0845 053 0013	Lancashire County Council's Welfare Rights Service provides independent and confidential advice and representation on benefits and tax credits for people living in Lancashire.

Childcare and Parenting

Service	Contact	Information
LCC Childcare Information Service	0800 195 0137	The Childcare Information Service is available at all Sure Start Children's Centres across Lancashire.
Sure Start Early Years and Childcare Service	0800 195 0137 01772 331348 www.lancashire.gov.uk/childcare	Sure Start Children's centres provide a range of high quality services to children aged under 5 and their families. The multi-agency services are based around a core offer of child & family health, early education & childcare, family support and employment & training.
Eskbank Family Centre	01695 725141	
First 4 Kids Neighbourhood Nursery	01695 558444	
Highfield Nursery (Chorley)	01257 262411	
Hawthorns Family Centre (Chorley)	01257 279360	
Stonehouse Nursery Leyland (SR)	01772 435529	
New Deal Lone Parent (Skelmersdale)	01695 695900	
New Deal Lone Parent (Ormskirk)	01695 694900	
New Deal Lone Parent (Chorley)	01257 565713	

Health

Health Visitors		Health visitors work with families with children aged under 5 and are experienced in child health, health promotion and education.
Children Looked After	Shona Cornthwaite	
LAC Nurses	01772 777219	LAC nurses provide a range of health services including sexual health for young people in care and care leavers.
Central Lancs Stop Smoking Service		Provides specialist support to help people stop smoking or to prevent them from starting.
Smoking Cessation in Pregnancy	01695 598416	
Smoking in Pregnancy Adviser	01772 644473	
Smoking Cessation Service	01772 644474	
Young Addaction	01772 255307	Young people's alcohol and drug service.
Dentistry - Central Lancs NHS		Young women are entitled to FREE dental treatment during pregnancy and up to 12 months following birth.
Yewdale Counselling Service	01695 720380	
Drugline Lancashire	01772 253840	

Housing

Service	Contact	Information
DISC Developing Initiatives Supporting Communities	www.disc-vol.org.uk 01772 734775	Is an independent North of England based charity that focuses on deprivation and exclusion. They can help people to access and retain appropriate and good quality housing across Lancashire.
Preston Housing Advice (City Council)	01772 906412 www.Preston.gov.uk	Help and advice on a wide range of accommodation and housing issues. Referrals to temporary accommodation in emergency situations e.g women's refuges and hostels. Covering Preston area.
Barnardos Moving on	01772 255304 www.barnardos.org.uk	The project works with young people aged 16-25 who are homeless or in housing need working in partnership with housing and young people's services to provide homeless assessments and housing assistance.
South Ribble KEY	01772 623893 www.keyonline.org.uk	KEY is a registered charity offering young people aged 16 - 25 housing support in the South Ribble area.
Sleep	Via South Ribble KEY 01772 623893	S.L.E.A.P. provides short-term emergency accommodation for homeless young people in Leyland.
Turning Point: The Mill (South Ribble)	01772 458657	Social care organisation providing services for people with complex needs, including drug/alcohol misuse, mental health problems & learning disabilities.
Progress Housing	Tel: 01772 450 600 www.newprogress.co.uk	Providing quality housing and related services to communities throughout the UK through: New Progress Housing Association, Progress Care Housing Association and New Fylde Housing.
Stonham Housing (Preston) Stonham Housing (Chorley/South Ribble)	01772 251274 01257 469150	Stonham offers accommodation with a safe environment where service users can develop their skills and move towards greater independence through their own choices.
Supported Housing for Lone Parents (SR) Supported Housing for Lone Parents (WL)	01772 625361 01695 585223	
Housing Services and Homelessness (South Ribble Borough Council)	01772 625371 or 625374 www.southribble.gov.uk	Offering a wide range of housing services for the South Ribble area.
Homelessness and Housing advice (Chorley Borough Council)	01257 515011 www.chorley.gov.uk	The Housing Options Team give advice and assistance on a variety of housing issues.
Home Start Chorley/South Ribble Home Start West Lancs Supported Housing for Lone Parents	01257 241636 01695 555537 01257 515552	
West Lancashire Housing	01695 577177 or 01695 585271 www.westlancs.gov.uk	West Lancs B.C. has 5 housing teams covering a wide range of housing services for the area.
West Lancs Crisis & Info Centre	01695 728391	Deals with homeless people, single males and females, from 16-25 years. Offers help, information and temporary accommodation.

Education, Training and Employment

Service	Contact	Information
LCC- Pregnancy and Parenthood Service	01257 517212 www.lancashire.gov.uk	Offering support to young people in Lancashire of compulsory school age who are pregnant or a teenage parent. It can also provide support to other young people whose behaviour indicates that they are at risk of becoming a teenage parent.
LCC - Young People's Service www.lancashire.gov.uk/yps (YPS) The Line YPS InfoCentre, Skelmersdale YPS InfoCentre, Ormskirk YPS InfoCentre, Chorley YPS InfoCentre, South Ribble	01772 531781 0800 511111 01695 737190 01695 583030 01257 248900 01772 426850	YPS can advise pregnant young women and young parents on education, training and employment opportunities and services available to them.
Care to Learn	0800 121 8989 www.direct.gov.uk	Grant available to young parents - Care to Learn can help pay for childcare and related travel costs whilst the young person is on a learning course. Available up to the age of 20.
Education Maintenance Allowance	0800 121 8989 www.direct.gov.uk	Education Maintenance Allowance can give up to £30 a week (means tested) to help young people 16-18, with the costs of remaining in learning post-16.
JobCentrePlus Childcare	01772 403367	

Other Services

Service	Contact	Information
Safe Centre, Preston	01772 523 344 or 01772 523949	Confidential counseling and medical service for women and men who have been raped or sexually abused/assaulted.
Children's Centres	0800 195 0137	Children's Centres provide a range of high quality services to children aged under 5 and their families. The multi-agency services offer child & family health, early education & childcare, family support and employment & training.
LCC - Young People's Service www.lancashire.gov.uk/yps	01772 531781	YPS offers a wide range of information, advice and guidance services and opportunities to young people across Lancashire.
National Domestic Violence Helpline	0808 2000 247	
Women's Aid	www.womensaid.org.uk /Women's Aid	
Refuge - National Website Chorley Women's Refuge Preston Women's Refuge South Ribble Women's Refuge Domestic Violence Helpline	www.refuge.org.uk/ 01257 260200 01772 435865 01772 201601	
West Lancashire Domestic Violence Helpline	0808 1003062	
Runaway Service		
Care to Learn? Childcare grant	0845 600 2809	
YPS Urban Exchange	01772 255300 Main Office 01772 255303 Sexual Health Team	YPS offers a wide range of information, advice and guidance services and opportunities to young people across Lancashire. As part of this the Urban Exchange has dedicated staff to deal with sexual health enquiries - contact Lorraine Gibbons.