




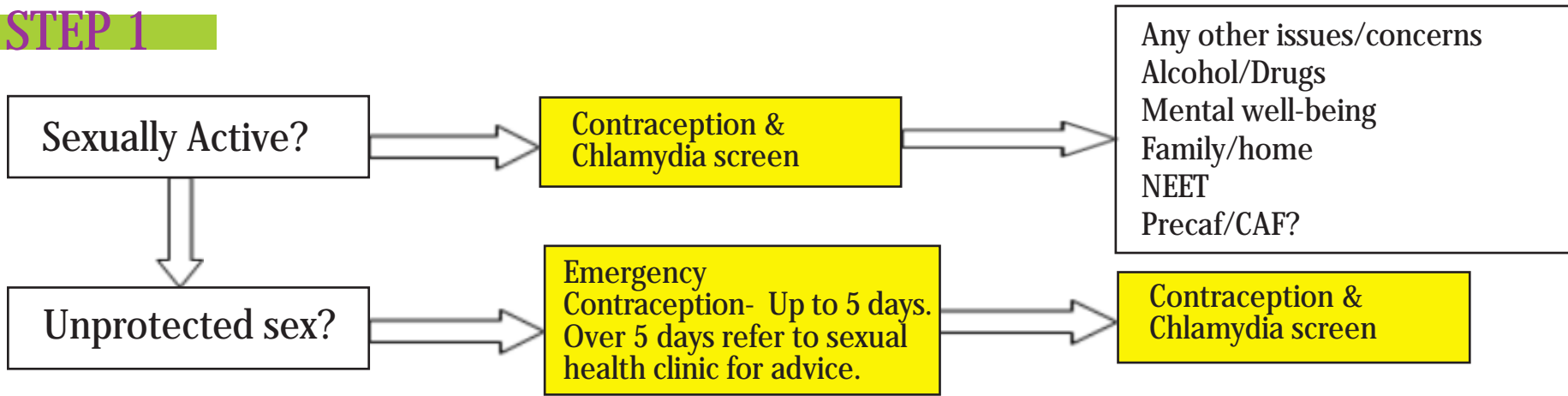
Lancashire  
*Teenage Pregnancy*  
Partnership



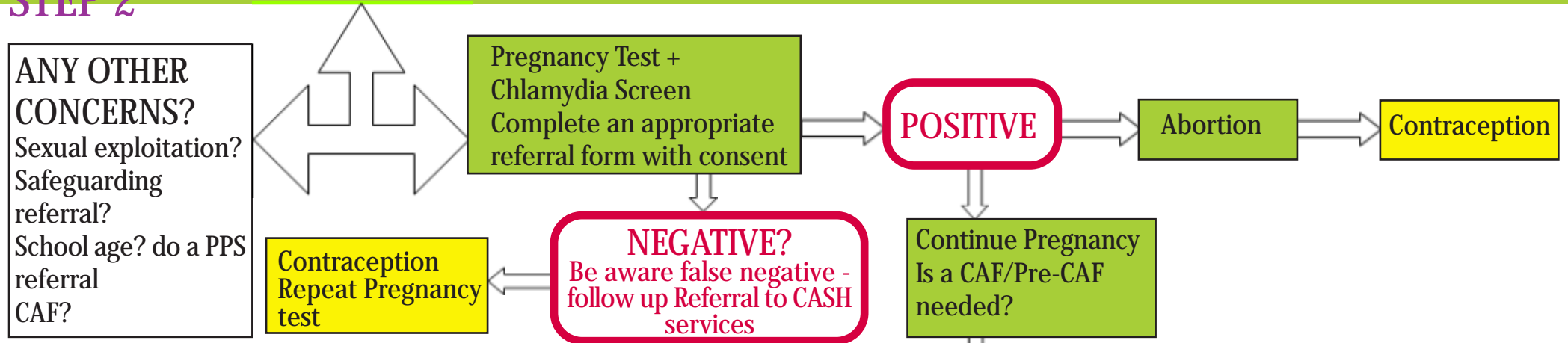
# Referral Checklist for Professionals North Lincs Area

# Sexual Health/Teenage Pregnancy Harm reduction flowchart for Professionals

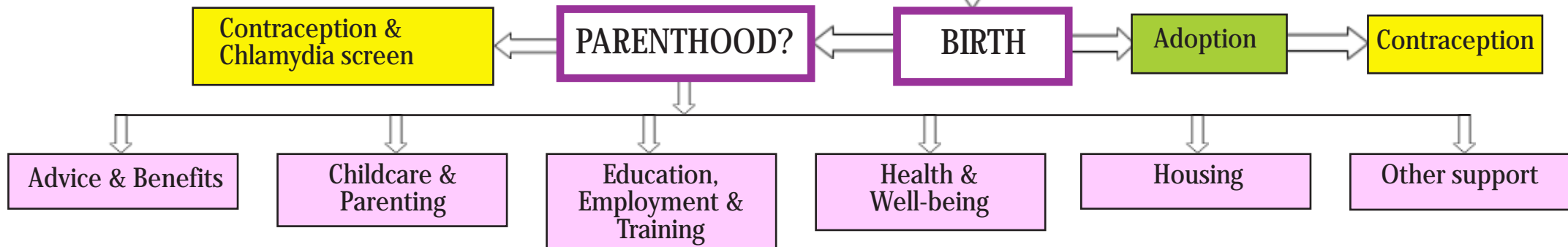
## STEP 1



## STEP 2



## STEP 3

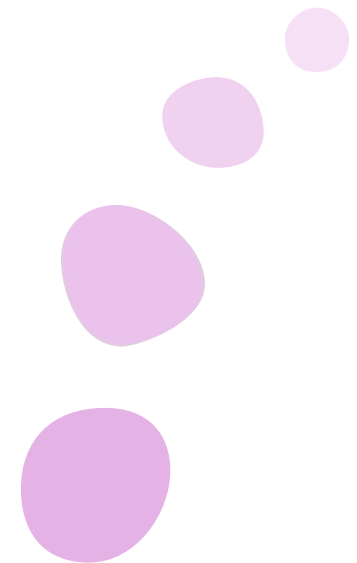


# Sexual Health/Teenage Pregnancy Referral Checklist

This referral checklist has been developed to assist professionals who are working with young women who may be pregnant.

There are differences in the ways that professionals can work with young women dependant on whether they are under or over 16.

This information is to help you make the most appropriate referrals for young people.



# Contraception and Sexual Health Services

Service	Contact	Information
North Lancashire NHS Contraception and Sexual Health Service, including Young People specific sexual health services www.northlancshealth.nhs.uk	North Lancs PC T Mon - Fri 9am - 4.30pm 0845 059 0015	Comprehensive contraception & sexual health service for men and women of all ages including services for young people aged under 25. Clinics are delivered in centres across Lancaster, Morecambe, Fylde and Wyre. The Sexual Health Outreach Service in non-health settings for young people, including condom distribution, pregnancy testing, chlamydia screening & advice & information on sex & relationships.
Level 2 Sexual Health Services Andsell Medical Centre - Mon 1 - 3pm	01253 657300	
Lancaster & Morecambe College - Mon & Wed term time 12 - 2pm	01524 66215	
Ashton Community Care Centre - Wed term time 3 - 5pm	0845 0590015	
Carnforth Health Hub - Tues 3 - 5pm	01524 727900	
YPC - Morecambe One Stop Shop Mon & Thurs 3.30 - 5.30pm	01524 831978	
Garstang Medical Centre - Tues 1 - 3pm	01995 603350	
Myerscough - Tues & Thurs 1 - 3pm	01995 642211	
Kirkham Clinic - Wed 1 - 3pm		
Thornton Medical Centre - Thurs 1 - 3pm	01253 821 457	
LCC - Young People's Service: Carnforth Hub	01524-727901	Offering contraception and sexual health service for young people aged under 19. Drop-in clinic once a week with a nurse in Carnforth.
Family Planning Co-ordinators: Health Centre		Sexual Health Services in a variety of settings for young people, including condom distribution, pregnancy testing, chlamydia screening & advice & information on sex & relationships.
Brook	www.brook.org.uk	Offering free and confidential sexual health advice and contraception to young people under 25 - including Relationships, STI's, Contraception, Pregnancy and Abortion.
GUM Clinic, (Hospital)		Information, advice and support about pregnancy, free pregnancy testing, and onward referral to antenatal and abortion services.
School Nurse Co-ordinator		Some school nurses provide drop-ins in schools.

# Emergency Contraception

Emergency hormonal contraception (EHC), sometimes known as the 'morning after pill', must be started within 72 hours of unprotected sexual intercourse through it is more effective the sooner it is taken. Intrauterine Devices (IUDs) can also be used as emergency contraception and need to be fitted within five days. IUDs are not suitable for all women.

Service	Contact	Information
Contraception and Sexual Health Services	Mon - Fri 9am - 4.30pm 0845 059 0015	EHC can be obtained from North Lancashire Sexual Health Services. Some clinics can also fit IUDs.
Pharmacies	Your local pharmacy or see <a href="http://www.nhs.uk/nhschoices">www.nhs.uk/nhschoices</a> or the Line 0800 511 111	EHC can be obtained free of charge from pharmacies participating in the EHC scheme. Ring pharmacy prior to visit to check a pharmacist is available. It can be brought from other pharmacies (approx £25) - for over 16's only.
GP's	Your own GP Practice <a href="http://www.northlancshealth.nhs.uk">www.northlancshealth.nhs.uk</a>	Some GP's will prescribe EHC. It is best to check with the practice before making an appointment.
NHS Walk In Centres		EHC can be obtained, free of charge, from NHS Walk-In Centres.

## Pregnancy Testing and Advice

Brook	<a href="http://www.brook.org.uk">www.brook.org.uk</a>	Information, advice and support about pregnancy, free pregnancy testing and onward referral to antenatal and abortion services.
GPs (see above) Pharmacies (see above)		
School Nurse Co-ordinator		Some school nurses provide pregnancy testing and onward referral for pregnant school girls.
LCC - Young People's Service: sexual health services?		Offering pregnancy testing, onward referral and information, advice and guidance to pregnant young women.

# Continuing Pregnancy

Service	Contact	Information
GPs	Your own GP	GPs can provide information, advice and support and onward refer to antenatal services.
Maternity Services:  Royal Lancaster Infirmary  Blackpool Victoria Hospital  Community Midwives  Specialist Midwifery Services:	  01524 65944  01253 300000	Pregnant women can be referred for antenatal care from their GP or direct to a midwife. Contact the local maternity departments for further guidance.  All pregnant women are allocated a named midwife and each hospital has a specialist teenage pregnancy midwife.  Provide maternity care outside the hospital, and visit women and their babies in their homes during the 28 days following birth.  This team provide specialist advice and support to women, their families and carers around the issues of: drugs, alcohol, mental health, domestic abuse, HIV and sexual health.
Re-Integration Officer Pregnancy and Parenthood Service: Pregnancy & Parenthood Co-ordinator (LEA) Learning Mentors		Supports school-aged pregnant young women and teenage parents to consider options and to overcome barriers to remaining in education.  The PPS offers mentoring and support to school-age parents and parents-to-be from Lancashire schools to enable them to complete their education and so maximise their potential and that of their children, lessen their social exclusion and provide practical help and support in parenting their children.
LCC- Young People's Service <a href="http://www.lancashire.gov.uk/yps">www.lancashire.gov.uk/yps</a>	01772 531781	Offering support to young pregnant women and teenage parents on a wide range of issues including housing, health issues, education, work and training options.
Healthy Start <a href="http://www.healthystart.nhs.uk">www.healthystart.nhs.uk</a>	0845 607 6823	
Breast feeding Support Balckpool and Fylde area :  Lancaster: Infant feeding coordinator	Jane Putsey Mary Whitmore 01253 655334  Liz Schofield 07833482768	

# Abortion

Service	Contact	Information
Brook	<a href="http://www.brook.org.uk">www.brook.org.uk</a>	Information, advice and support on abortion and referral abortion services.

# Adoption and Fostering

Service	Contact	Information
LCC- Lancashire Adoption Service	0800 1951183 <a href="http://www.lancashire.gov.uk">www.lancashire.gov.uk</a>	The role as a local authority is to secure the best possible future for children. Adoption is about meeting the needs of children - not meeting the needs of adults who wish to adopt LCC offers free and confidential advice and support to secure the best possible future for all the children they place. The Fostering Recruitment and Assessment team arrange the temporary placement of children with foster carers when they are unable to live at home for a range of reasons and recruit foster carers.
Fostering Recruitment and Assessment team	0800 1951183 <a href="http://www.lancashire.gov.uk">www.lancashire.gov.uk</a>	
British Association for Adoption & Fostering	<a href="http://www.baaf.org.uk">www.baaf.org.uk</a>	Providing National information on fostering and adoption services.
DirectGov	<a href="http://www.direct.gov.uk">www.direct.gov.uk</a>	Providing National information on fostering and adoption services.
TALKadoption	0808 808 1234	TALKadoption is a national helpline for young people under 26 who want to talk about anything to do with adoption. Calls are free and confidential.

# Advice and Benefits

Service	Contact	Information
LCC - Young People's Service www.lancashire.gov.uk/yps (YPS) The Line YPS InfoCentre, Lancaster YPS InfoCentre, Morecambe	01772 531781  0800 511111	YPS can advise pregnant young women and young parents on benefits and services available to them.
JobCentre Plus: New claims for benefits Benefits enquiries Search for a job	0800 0556688 0845 6088524 0845 6060234	Offering help and advice on benefits and how to apply, finding a job and the recruitment process.
Citizens Advice Bureau		Helps people resolve their legal, financial and other problems by providing free, independent and confidential advice.
LCC - Welfare Rights Main Office - Preston  LCC -Welfare Rights Office - Lancaster and Wyre	0845 053 0013  0845 053 0013	Lancashire County Council's Welfare Rights Service provides independent and confidential advice and representation on benefits and tax credits for people living in Lancashire. The Lancaster and Wyre Team provide information, independent and confidential advice and representation on benefits and tax credits.
North Lancs Advocacy	01253 362140	NLA - offer support to ensure access to services as well as ensuring fair dealings with services. They can also help with decision making, offer independent advice, help with understanding rights and support clients to speak up.
Tax, Benefits, Debt websites/helplines:  Income Tax, Tax Credit, Child Benefit  Benefits Helpline  Debt  Credit Crunch Stress Line	  www.hmrc.gov.uk  0800 055 6688  www.nationaldebtline.co.uk  0300 123 2000	

# Childcare and Parenting

Service	Contact	Information
LCC Childcare Information Service	0800 195 0137	The Childcare Information Service is available at all Sure Start Children's Centres across Lancashire.
Sure Start Early Years and Childcare Service	0800 195 0137 01772 331348 <a href="http://www.lancashire.gov.uk/childcare">www.lancashire.gov.uk/childcare</a>	Sure Start Children's centres provide a range of high quality services to children aged under 5 and their families. The multi-agency services are based around a core offer of child & family health, early education & childcare, family support and employment & training.
Parenting co-ordinators: Jan Royle - Fylde	0783 3050620 <a href="mailto:jan.royle@fyldecoast.ymca.org">jan.royle@fyldecoast.ymca.org</a>	
Sue Earnshaw (Lancaster District)	<a href="mailto:sue.earnshaw@lancashire.gov.uk">sue.earnshaw@lancashire.gov.uk</a> <a href="http://www.parenting.signposts.org.uk">www.parenting.signposts.org.uk</a>	
Family Services Teen Parent co-ordinator and young person's PA (LCC & NHS) Margot Roe	07766 137172	Provide care and support to all teen parents regarding options around keeping the baby, antenatal care and signposting to relevant agencies. The focus is on the pregnant girl, co-ordinating pregnancy and giving advice about education, work, college, school, housing and benefits.
Targetted & Early Intervention Service North Lancs Directorate for Children & Young People  Val Powell	01253 872644	Provide 1 - 1 family support for families with children aged 0 - 18. Their aim is to enable, safeguard and empower families. Also to prevent children becoming LAC by working in collaboration with partner agencies.

# Health

Service	Contact	Information
Health Visitors		Health visitors work with families with children aged under 5 and are experienced in child health, health promotion and education.
Children Looked After Looked After children's nurse	Val Baxter 01995 607621	LAC nurses provide a range of health services including sexual health for young people in care and care leavers.
North Lancs Stop Smoking Service  Smoking Cessation Service	  Adele Shields 01524 519346	  Provides specialist support to help people stop smoking or to prevent them from starting.
CAMHS Child & Adolescent Mental Health Service	Team Leader: Frank Wood 01253 657166 frank.wood@blackpool.nhs.uk	Supporting children who have emotional or behaviour difficulties or mental health disorders. Also provide parental support.
Young Addaction	Lee Girvan 01524 428310 lee.girvan@addaction.org.uk	Young people's alcohol and drug service providing support and advice around substance misuse proactive and reactive (drugs and alcohol).
Dentistry - North Lancs NHS		Young women are entitled to FREE dental treatment during pregnancy and up to 12 months following birth.
Drugline Lancashire	01772 253840	

# Housing

Service	Contact	Information
DISC Lancashire Floating Support	0800 107 5558 01772 723061 <a href="http://www.disc-vol.org.uk">www.disc-vol.org.uk</a>	Housing related support for individuals, who may have a variety of needs and/or issues. e.g. rent arrears, neglect of property, complaints, anti-social behaviour, domestic violence, mental health issues, substance misuse.
Preston Housing Advice (City Council)	01772 906412 <a href="http://www.Preston.gov.uk">www.Preston.gov.uk</a>	Help and advice on a wide range of accommodation and housing issues. Referrals to temporary accommodation in emergency situations e.g women's refuges and hostels. Covering Preston area.
Barnardos Moving on	01772 255304 <a href="http://www.barnardos.org.uk">www.barnardos.org.uk</a>	The project works with young people aged 16-25 who are homeless or in housing need working in partnership with housing and young people's services to provide homeless assessments and housing assistance.
Progress Housing	Tel: 01772 450 600 <a href="http://www.newprogress.co.uk">www.newprogress.co.uk</a>	Social care organisation providing services for people with complex needs, including drug/alcohol misuse, mental health problems & learning disabilities. Providing quality housing and related services to communities throughout the UK through: New Progress Housing Association, Progress Care Housing
Stonham Housing		Association and New Fylde Housing.  Stonham offers accommodation with a safe environment where service users can develop their skills and move towards greater independence through their own choices.
Fylde Borough Council Homelessness and Housing Advice	01256 658658 To make an advisor	Offering housing advice and assistance to people who are homeless for the Fylde area.
Fylde Direct One Stop Shop	01253 658658 <a href="mailto:housing@fylde.gov.uk">housing@fylde.gov.uk</a> <a href="http://www.fylde.gov.uk/housing">www.fylde.gov.uk/housing</a>	Provides advice on: Looking for accommodation including private rented, social rented or sheltered housing; Housing advice; Homelessness; Struggling with mortgage payments. Out of hours homelessness service in partnership with New Fylde Housing - 01253 642111.
Face to Face YMCA	Bond Guarantee Officer 01253 720270	Bond guarantee scheme with some pre and post tenancy support. Finding and securing private rented accommodation within Fylde Borough, using private landlords and selected letting agencies.
New Fylde Housing	01253 642000 <a href="http://www.newfyldehousing.co.uk">www.newfyldehousing.co.uk</a>	Warwick House, Kilnhouse Lane St Annes, FY8 3DU. Provide social rented housing within Fylde area via a choice based vetting system.

## Housing cont....

Service	Contact	Information
Other Housing Associations operating in Fylde	<a href="http://www.fylde.gov.uk/housing/homelessness/accommodation/housing-association-properties/">www.fylde.gov.uk/housing/homelessness/accommodation/housing-association-properties/</a>	
Wyre Borough Council - Options	01253 891000	The Housing Options Team give advice and assistance on a variety of housing issues.
Regenda	0344 7360067 <a href="mailto:info@regendafirst.org.yk">info@regendafirst.org.yk</a>	
George Williams House Based at Fylde Coast YMCA	01253 878826 Contact Ian Thorpe <a href="mailto:ian.thorpe@fyldecoastymca.org">ian.thorpe@fyldecoastymca.org</a>	George Williams House has 9 flats available for parents and families with up to three children who are homeless or threatened by homelessness. The residents are provided with independent living skills around the ECM Outcomes and when deemed capable of independent living are recommended for priority housing status.

## Education, Training and Employment

Service	Contact	Information
LCC- Pregnancy and Parenthood Service	01257 517212 <a href="http://www.lancashire.gov.uk">www.lancashire.gov.uk</a>	Offering support to young people in Lancashire of compulsory school age who are pregnant or a teenage parent. It can also provide support to other young people whose behaviour indicates that they are at risk of becoming a teenage parent.
LCC - Young People's Service <a href="http://www.lancashire.gov.uk/yps">www.lancashire.gov.uk/yps</a> (YPS) The Line	01772 531781  0800 511111	YPS can advice pregnant young women and young parents on education, training and employment opportunities and services available to them.
Care to Learn	0800 121 8989 <a href="http://www.direct.gov.uk">www.direct.gov.uk</a>	
Education Maintenance Allowance	0800 121 8989 <a href="http://www.direct.gov.uk">www.direct.gov.uk</a>	Grant available to young parents - Care to Learn can help pay for childcare and related travel costs whilst the young person is on a learning course. Available up to the age of 20.
JobCentrePlus Childcare	01772 403367	Education Maintenance Allowance can give up to £30 a week (means tested) to help young people 16-18, with the costs of remaining in learning post-16.

## Education, Training and Employment cont...

Service	Contact	Information
Blackpool & the Fylde College Project Team	01253 402950 abra@blackpool.ac.uk  Liz Nicholson (Adult Learning) elizabeth.nicholson @lancashire.gov.uk	Post 18 free courses for people who are not working to help them gain sustainable employment. Operate from venues in St Annes, Blackpool and Fleetwood.
Lancashire Link Team	Angela Norris 01524 387836  angela@blackhealthagency.org.uk	
Lancaster & Morecambe College Student Liaison Officer	Adele Burrow a.burrow@lmc.ac.uk	
In Training	Darren Jones 01253 778586 darren.jones@intraining.co.uk	Offers soft employability skills such as confidence, motivation, self-esteem, building a CV and holding mock interviews etc. Clients can get certificates in Health and Safety, First Aid, Food Hygiene.  The agency has employer links and has pre-recruitment and a guarantee interview scheme for people with a history of alcohol/drug use and ex-offenders. They also pay registered childcare whilsy parents attend the centre.

## Other Services

Service	Contact	Information
<p>Children's Centres</p> <p>From Bump to Birth and Beyond - Sure Start Children's Centres supporting Lancashire parents through pregnancy and beyond</p>	<p>0800 195 0137</p> <p>Contact your local Children's Centre via Childcare Information Service 0800 195 0137</p>	<p>Children's Centres provide a range of high quality services to children aged under 5 and their families. The multi-agency services offer child &amp; family health, early education &amp; childcare, family support and employment &amp; training.</p>
<p>LCC - Young People's Service www.lancashire.gov.uk/yps Fylde InfoCentre (St Annes) Wyre InfoCentre (Fleetwood)</p>	<p>01772 531781 (main contact no.)</p> <p>01253 783939 01253 775050</p>	<p>YPS offers a wide range of information, advice and guidance services and opportunities to young people across Lancashire.</p>
<p>Fylde Citizens Advice Bureau Wyre Citizens Advice Bureau</p> <p>Garstang Citizens Advice Bureau</p>	<p>01772 682588 01253 308400 (advice) 01253 866520 (admin) advice@wyrecab.cabnet.org.uk 01253 866520</p>	<p>Offer advice on debt management, benefit checking, housing, employment, consumer issues, relationships, family matters, health etc.</p> <p>Advisers look holistically at a client's situation, so potential problems can be identified early or pre-empted, which prevents escalation.</p>
<p>National Domestic Violence Helpline</p> <p>Women's Aid</p> <p>Lancaster Women's Aid</p> <p>Fylde Coast Women's Aid Refuge - National Website</p>	<p>0808 2000 247</p> <p>www.womensaid.org.uk /Women's Aid Sharron Gardner sharron@ldwa-support.org 01253 789337 www.refuge.org.uk/</p>	<p>Fylde Coast Women's Aid - works with women and children suffering with domestic violence. Offering advice, coaching, awareness raising, emotional and relationship support.</p>
<p>Care to Learn? Childcare grant Children Looked After Nurse CAF Support Officers:</p>	<p>0845 600 2809 07887 657126 Zoe Owen/Ruth Gardner 07817 624891 zoe.owen@lancashire.gov.uk ruth.gardner@lancashire.gov.uk</p>	

## Other Services

Service	Contact	Information
Help Direct Fylde Office based in St Annes Wyre Office based in Fleetwood	0303 333 1111 admin@fwhelpdirect.org.uk	Confidential service working with a large number of organisations and community groups to provide and develop support in these areas: health and fitness, home and garden, home and community safety, learning and leisure, managing finances, mobility and transport, community groups, getting the right help, relationships and families, employment, volunteering and training. As well as counselling and mental health and well being services.
Family Fund	0845 1304542 or 01904 621115 info@familyfund.org.uk	Offer grants to low income families that relate to the additional needs of severely disabled children and young people.
Breakthrough (Lancaster)	01254 596673 / 01254 596686 Simon Coakes - Detective Sergeant Police Officers: Mark Greaves/ Marion Scott / Helen Moran or public protection unit 01254 596758 / 01254 596760	Breakthrough is a service similar to Awaken, working with young people around sexual exploitation.

